



Syöte National Park's age-old spruce forests are a perfect example of the hill and fell country. Hilltop bogs and hanging bogs add variation to the tree-covered fell landscape. Other natural features typical of the area include pristine springs and streams, which are surrounded by lush spruce mires. The National Park has a comprehensive network of trails for hiking, mountain biking, and skiing.

Exploring the Backwoods

Located in the snowiest corner of Finland, spruces crowned with snow form the trademark of the area in winter. Mixed forests dominated by deciduous trees are a result of slash and burn agriculture and forest fires and provide a home to a strong Siberian flying squirrel population. Consistent old fell forests also provide excellent hiding places to the shy red-flanked bluetail and the magnificent golden eagle. Of the large carnivores, bear, wolverine, lynx, and wolf can be spotted in the Syöte National Park. In addition, several mushroom and plant species that have become endangered elsewhere are found in the old forests of the national park.

In the Syöte National Park area, humans have coexisted with nature for thousands of years. An observant visitor can spot all kinds of traces of human habitation from times long gone, such as tar pits and memorial trees. A visit to the Crown tenant farm, which has been restored in the wilderness, is a nostalgic trip back in time.

Trails in the Syöte area:

Nature trails Naavaparta trail (3.2km), Vattukuru Ravine (2.1km), Kellarilampi Pond (900m), and Salojen Siivekkäät (Wingbeats in the Wilderness) (500m) introduce the special features of the Syöte area. Circular routes suitable for day trips include Ahmankierros (Wolverine's Circular Trail) (17km), Syötteen kierros (Syöte Circular Trail) (17km), Romevaaran huiputus (Romevaara Summit Trail) (5.8km), Pytkyn pyrähdys (Pytky Spurt Trail) (9 km), and Rytivaaran kierros (Rytivaara Circular Trail) (9 km). Hikers who are looking for more challenging routes can try the UKK Trail that passes through the national park. In winter, the area has various ski tracks and excellent opportunities for snowshoeing. Syöte also has three mountain biking and four regular cycling routes. The River Pärjänjoki Canoe Route (22km) that passes through the national park is perfect for kayaking.

Overnight Stays: 3 rental huts, Ahmatupa (incl. sauna) €10/person/day (up to 8 persons), Rytitupa €6/person/day (up to 8 persons) and Isoniemi €6/person/day (up to 4 persons) (reservations at the Syöte Visitor Centre), and 8 open wilderness huts. Rest spots: 5 day trip huts and 6 lean-tos

Syöte Visitor Centre

The visitor centre's permanent exhibition 'Tales from the Backwoods' introduces the history and cultural heritage of the national park. Presentations with nature themes are shown on the big screen. The visitor centre organizes introductory tours for groups on reservation (school groups free of charge). Syöte Visitor Centre is an excellent starting point for trips. In addition to the latest hiking tips, visitors can purchase maps and pack their rucksacks with snacks from the visitor centre's café-restaurant. Child backpacks, disc golf discs and rental huts Ahmantupa, Rytitupa and Isoniemi can also be reserved at the Visitor Centre.

Respect the Environment!

No waste should be left behind in Syöte National Park. There are no waste collection bins in the parking areas, along the routes, or at the campfire sites, so visitors must take their litter away with them.

However, combustible waste can be burned in campfire and biodegradable waste composted at the dry-toilets at campfire sites.

METSÄHALLITUS – National Park Administrator

Syöte Visitor Centre

Erätie 1, FI-93280 syöte

tel. +358 40 5831608, syote@metso.fi

www.outdoors.fi/syote, excursionmap.fi

www.facebook.com/syotteenkansallispuisto

Please follow these Instructions FOR THE GOOD OF THE ENVIRONMENT:

In Syöte National Park it is

ALLOWED

- to walk and ski independently
- to cycle along trails marked for the purpose
- to light campfires and to camp for short periods at the rest spots
- to pick berries and edible mushrooms
- to bring animals into open wilderness huts
- to angle and ice-fish.

NOT ALLOWED

- to litter
- to let pets run free
- to use snowmobiles
- to damage the soil, vegetation, or nature in general, and to disturb wild animals
- to catch or collect invertebrates
- to drive a motor vehicle beyond the designated roads
- to light campfires if a forest fire warning is in effect

SYÖTE NATIONAL PARK

- 300 km²
- Established in 2000
- Located in the municipalities of Pudasjärvi, Taivalkoski, and Posio
- All Finnish national parks are managed and maintained by Metsähallitus Natural Heritage Services.





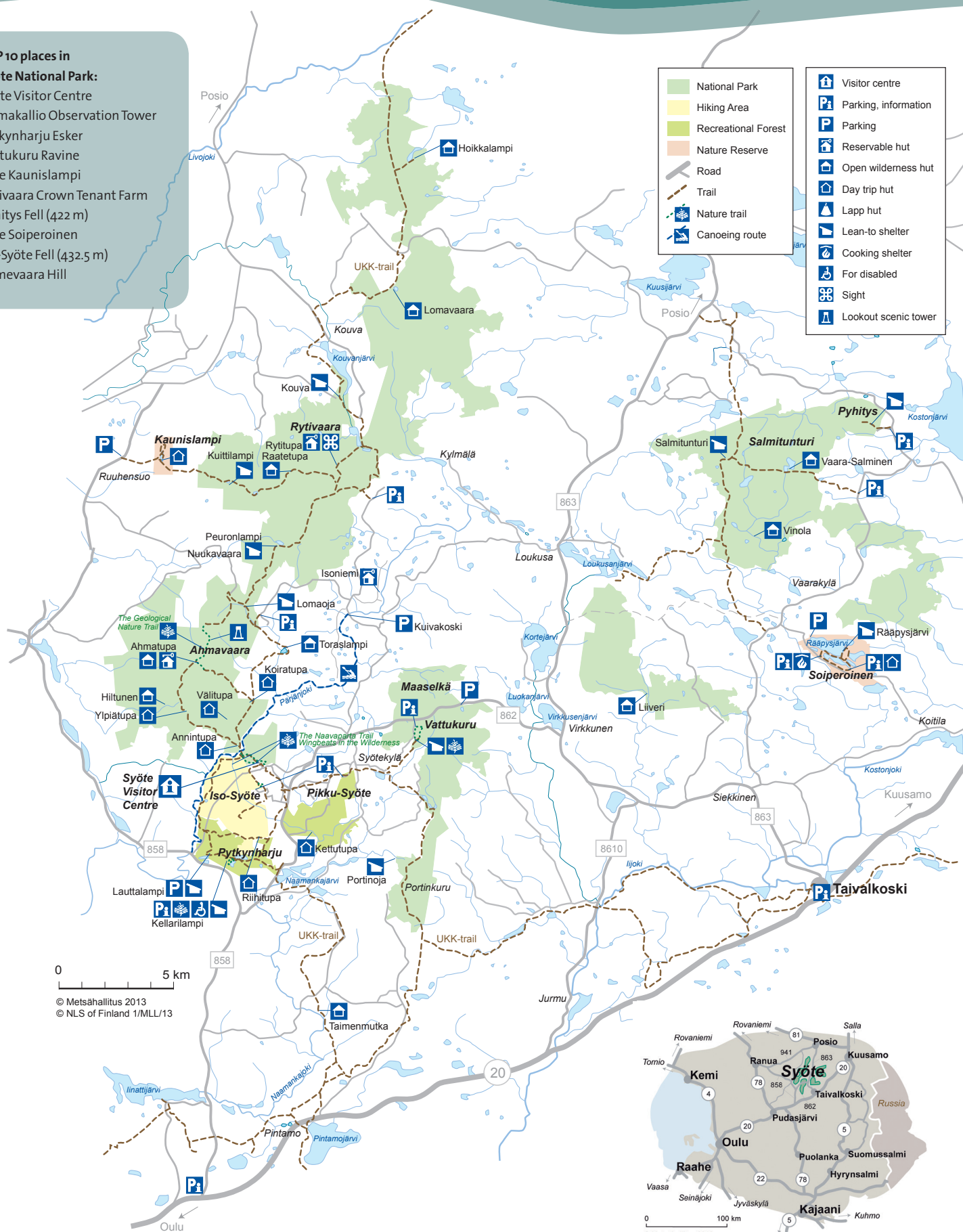
English



TOP 10 places in

Syöte National Park:

Syöte Visitor Centre
Ahmakallio Observation Tower
Pytkynharju Esker
Vattukuru Ravine
Lake Kaunislampi
Rytivaara Crown Tenant Farm
Pyhitys Fell (422 m)
Lake Soiperoinen
Iso-Syöte Fell (432.5 m)
Romevaara Hill



0 100 km
© Metsähallitus 2012
© NLS of Finland 1/MLL/12



METSÄHALLITUS